

## THE WORLD THROUGH OUR SENSES

- 1 Diagram 6 shows a section through part of a human head containing sensory organ.

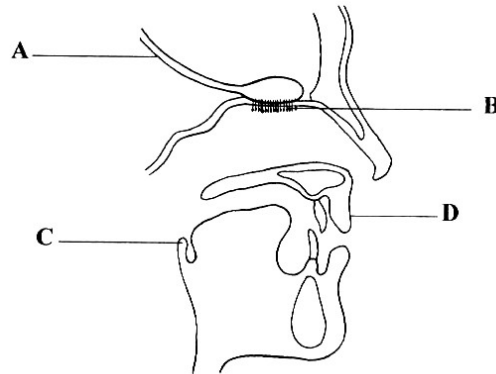


Diagram 6

Which of the parts labelled **A**, **B**, **C** or **D** is a sensory cell?

**PMR 2008**

- 2 Which part of a plant shows positive phototropism?

- A Root
- B Shoot
- C Stem
- D Fruit

**PMR 2008**

- 3 Which of the following sensory organs can detect touch, pain and pressure?

- A Eyes
- B Nose
- C Ears
- D Skin

**PMR 2007**

- 4 The Following information shows a type of response of a plant due to a stimulus.

- shoot grows away from the stimulus
- enables the plant to obtain water and minerals
- roots grow towards gravitational attraction

Which of the following is the response?

- A Geotropism
- B Phototropism
- C Thigmotropism
- D Hydrotropism

**PMR 2006**

1 Diagram 1.1 shows how human eye can see. (PMR 2007)

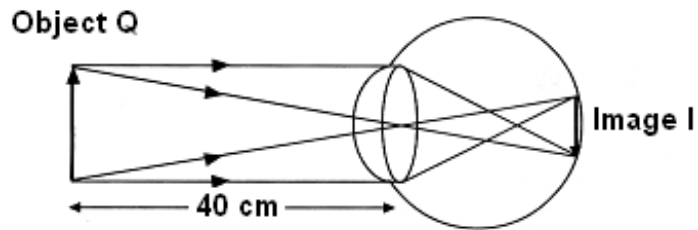


Diagram 1.1

(a) (i) **State one** difference between object **Q** and image **I**.

\_\_\_\_\_ (1 mark)

(ii) **How** does the size of the image **I** change when the eye is 10 cm from object **Q**?

\_\_\_\_\_ (1 mark)

(iii) **State one** reason for the answer in 1(a)(ii).

\_\_\_\_\_  
\_\_\_\_\_ (1 mark)

(b) (i) **Complete** Diagram 1.2 to show the formation of an image of a distant object on the retina of the eye of a short sighted person.

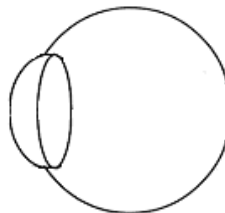


Diagram 1.2

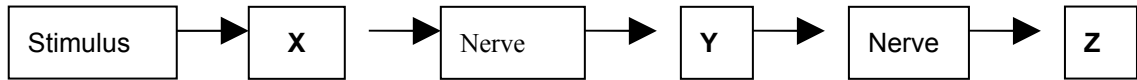
(ii) **What** causes the situation in Diagram 1.2 to happen?

\_\_\_\_\_  
\_\_\_\_\_ (1 mark)

(iii) **How** can the situation in Diagram 1.2 be corrected?

\_\_\_\_\_ (1 mark)

5 The diagram shows the path of an impulse after a stimulus is received by the skin.



Which of the following represents X, Y and Z?

	X	Y	Z
A	Brain	Effector	Receptor
B	Receptor	Effector	Brain
C	Brain	Receptor	Effector
D	Receptor	Brain	Effector
			<b>PMR 2005</b>

6 The diagram shows a change in size of the pupil



Which of the following action will cause this change?

- A Reading a book in a dark room
- B Entering a darkroom from a bright room
- C Taking off sun glasses in a bright place
- D Looking at a distance object after looking at a near object.

**PMR 2004**